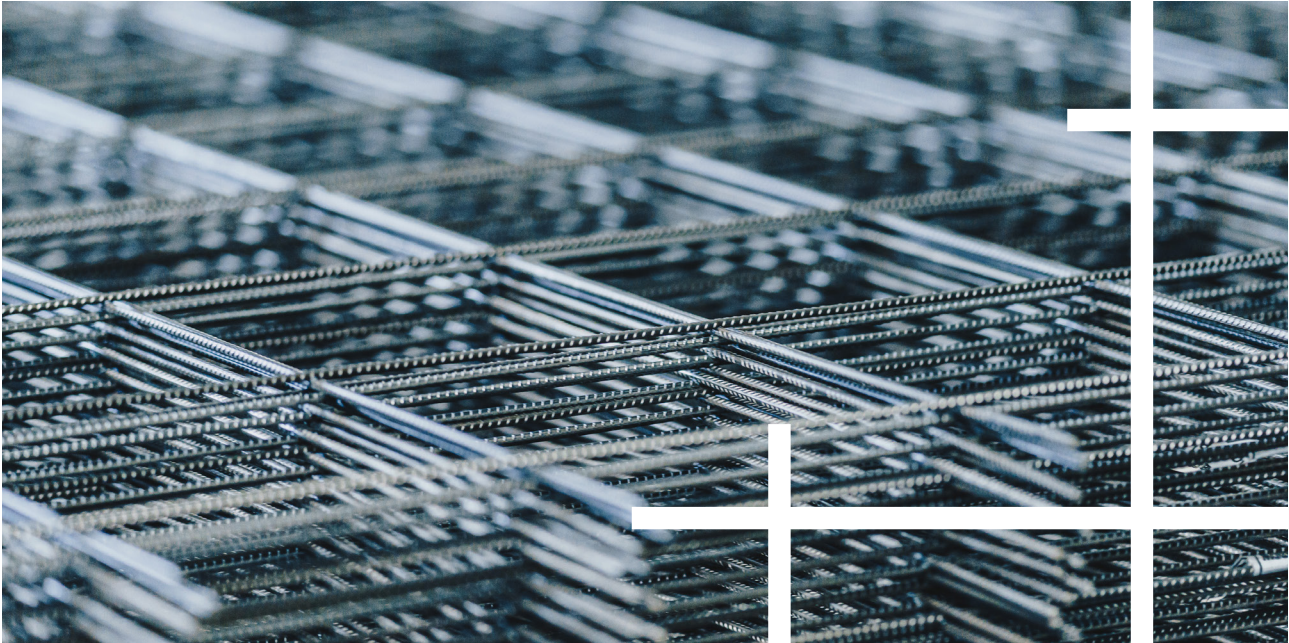


STANDARD REINFORCEMENT MESH

NETHERLANDS



Standard reinforcement mesh is a standardized welded wire mesh, produced in different varieties.

Baustahlgewebe offers standard and special meshes in both grades. Normal ductility meshes made of cold-drawn wire as well as high ductility meshes made of hot-rolled wire with special ribbing.

PRODUCT SPECIFICATION

| | | | |
|---------------------|---|-----------|-------------------------|
| Grade | » B500A | or | B500B |
| Ductility | » Normal | | High, on request |
| Fabricated | » According to NEN 6008:2008 | | |
| Availability | » B500A from stock or production; B500B on request | | |

STANDARD REINFORCEMENT MESH

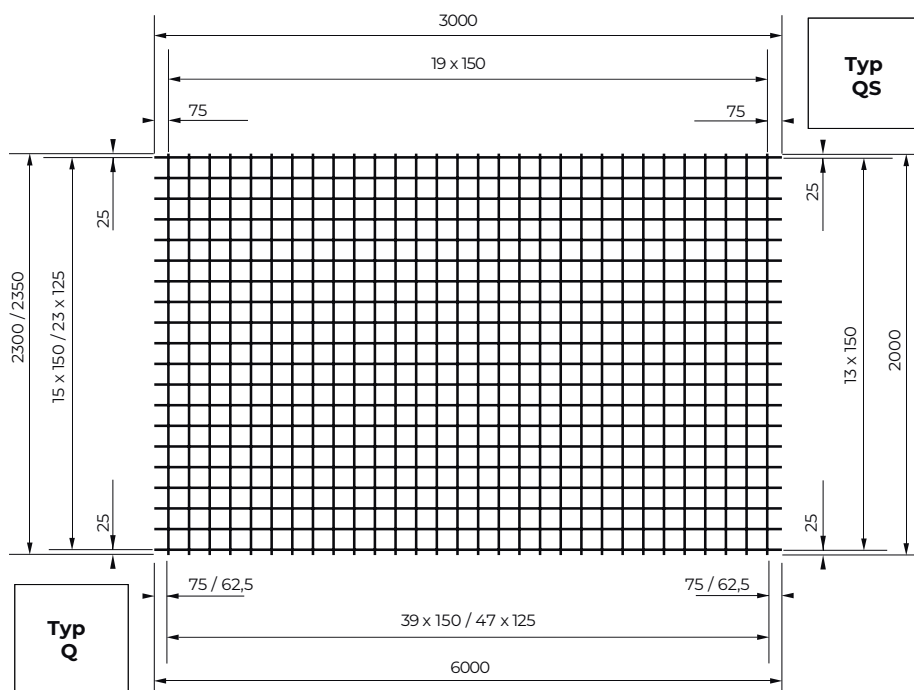
NETHERLANDS

TYPES AND DRAWINGS

Q MESHES AND QS MESHES



| Mesh type | Mesh size in m | Wire spacing in mm | Wire ϕ in mm line/cross | Weight per Mesh in kg | Items per bundle | Weight per bundle in kg |
|-----------|----------------|--------------------|------------------------------|-----------------------|------------------|-------------------------|
| Q 188 A | 6,00 x 2,30 | 150/150 | 6,0/6,0 | 41,74 | 50 | 2.087,00 |
| Q 257 A | 6,00 x 2,30 | 150/150 | 7,0/7,0 | 56,78 | 40 | 2.271,00 |
| Q 335 A | 6,00 x 2,30 | 150/150 | 8,0/8,0 | 74,26 | 30 | 2.228,00 |
| Q 424 A | 6,00 x 2,30 | 150/150 | 9,0/9,0 | 84,36 | 30 | 2.531,00 |
| Q 524 A | 6,00 x 2,30 | 150/150 | 10,0/10,0 | 100,88 | 20 | 2.018,00 |
| Q 636 A | 6,00 x 2,35 | 100/125 | 9,0/10,0 | 132,00 | 20 | 2.640,00 |
| QS 130 A | 3,00 x 2,00 | 150/150 | 5,0/5,0 | 12,63 | 50 | 632,00 |
| QS 188 A | 3,00 x 2,00 | 150/150 | 6,0/6,0 | 18,20 | 50 | 910,00 |
| QS 335 A | 3,00 x 2,00 | 150/150 | 8,0/8,0 | 32,39 | 40 | 1.296,00 |



STANDARD REINFORCEMENT MESH

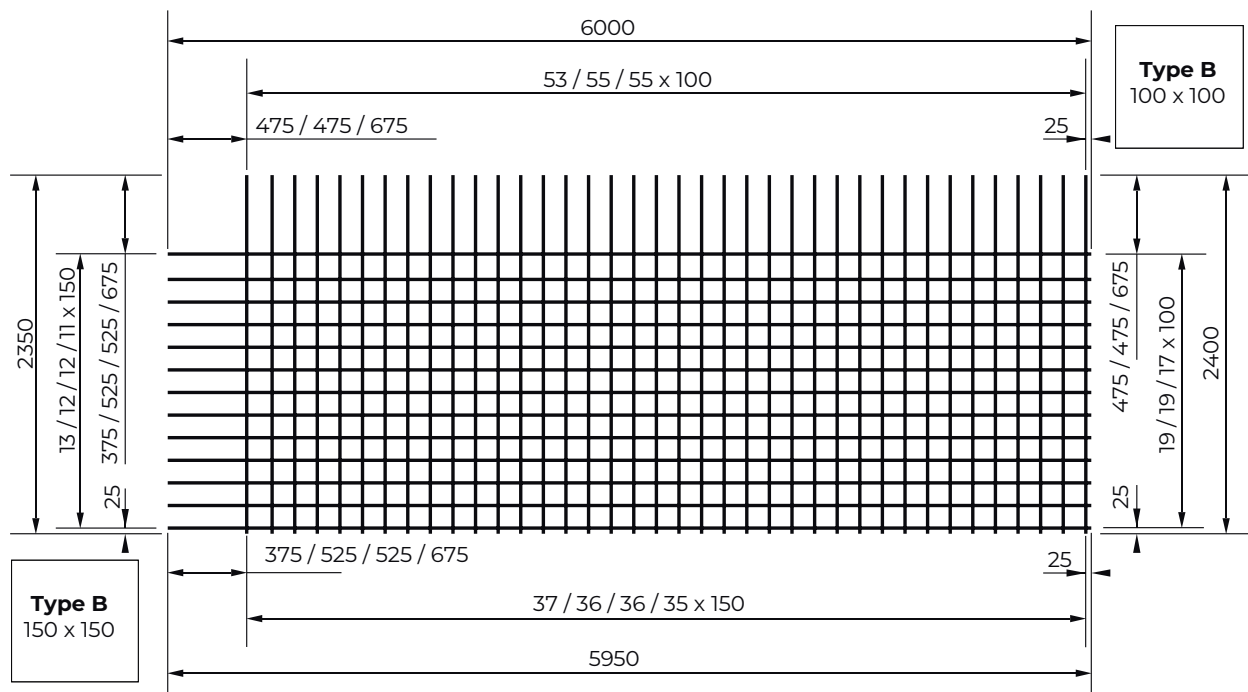
NETHERLANDS

TYPES AND DRAWINGS

B MESHES



| Mesh type | Mesh size in m | Wire spacing in mm | Wire ϕ in mm line/cross | Weight per mesh in kg | Items per bundle | Weight per bundle in kg |
|-----------|----------------|--------------------|------------------------------|-----------------------|------------------|-------------------------|
| B 188 A | 5,95 x 2,35 | 150/150 | 6,0/6,0 | 38,32 | 40 | 1.533,00 |
| B 335 A | 5,95 x 2,35 | 150/150 | 8,0/8,0 | 64,90 | 20 | 1.298,00 |
| B 524 A | 5,95 x 2,35 | 150/150 | 10,0/10,0 | 101,37 | 10 | 1.014,00 |
| B 754 A | 5,95 x 2,35 | 150/150 | 12,0/12,0 | 138,53 | 10 | 1.385,00 |
| B 503 A | 6,00 x 2,40 | 100/100 | 8,0/8,0 | 100,49 | 10 | 1.005,00 |
| B 785 A | 6,00 x 2,40 | 100/100 | 10,0/10,0 | 156,97 | 10 | 1.570,00 |
| B 1131 A | 6,00 x 2,40 | 100/100 | 12,0/12,0 | 210,99 | 5 | 1.055,00 |



STANDARD REINFORCEMENT MESH

NETHERLANDS

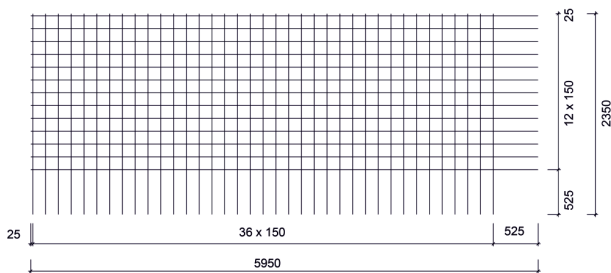
TYPES AND DRAWINGS

BEC MESHES

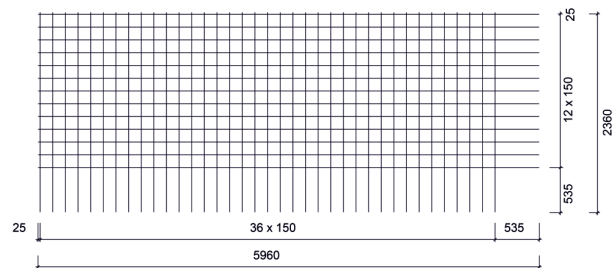


| Mesh type | Mesh size in m | Wire spacing in mm | Wire ϕ in mm line/cross | Weight per mesh in kg | Items per bundle | Weight per bundle in kg |
|-----------|----------------|--------------------|------------------------------|-----------------------|------------------|-------------------------|
| BEC 188 A | 5,95 x 2,35 | 150/150 | 6,0/6,0 | 36,48 | 40 | 1.459,00 |
| BEC 257 A | 5,96 x 2,36 | 150/150 | 7,0/7,0 | 49,77 | 30 | 1.493,00 |
| BEC 335 A | 4,45 x 2,35 | 150/150 | 8,0/8,0 | 45,23 | 30 | 1.357,00 |
| BEC 524 A | 5,90 x 2,30 | 150/150 | 10,0/10,0 | 89,71 | 15 | 1.346,00 |

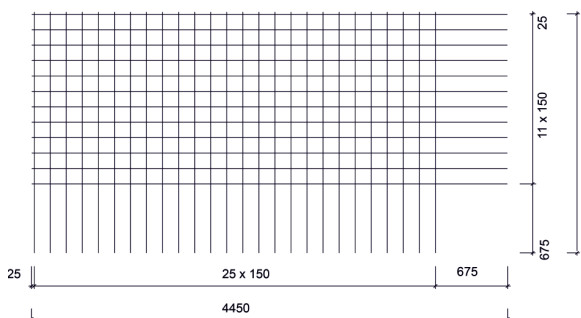
BEC 188 A



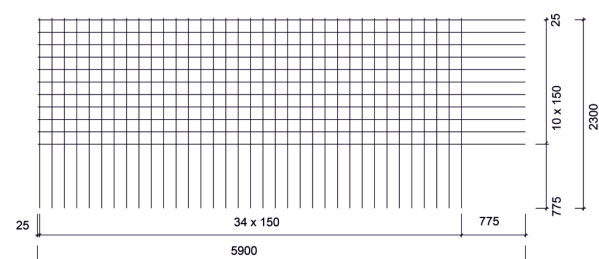
BEC 257 A



BEC 335 A



BEC 524 A



STANDARD REINFORCEMENT MESH

NETHERLANDS

TYPES AND DRAWINGS

P MESHES



| Mesh type | Mesh size in m | Wire spacing in mm | Wire \varnothing in mm line/cross | Weight per mesh in kg | Items per bundle | Weight per bundle in kg |
|-----------|----------------|--------------------|-------------------------------------|-----------------------|------------------|-------------------------|
| P 131 | 5,00 x 2,00 | 150/150 | 5,0/5,0 | 20,17 | 50 | 1.009,00 |
| P 189 | 5,00 x 2,00 | 150/150 | 6,0/6,0 | 29,08 | 50 | 1.454,00 |
| P 335 | 5,00 x 2,00 | 150/150 | 8,0/8,0 | 51,75 | 30 | 1.553,00 |
| P 524 | 5,00 x 2,00 | 150/150 | 10,0/10,0 | 80,83 | 20 | 1.617,00 |
| P 754 | 5,00 x 2,00 | 150/150 | 12,0/12,0 | 116,33 | 10 | 1.163,00 |

