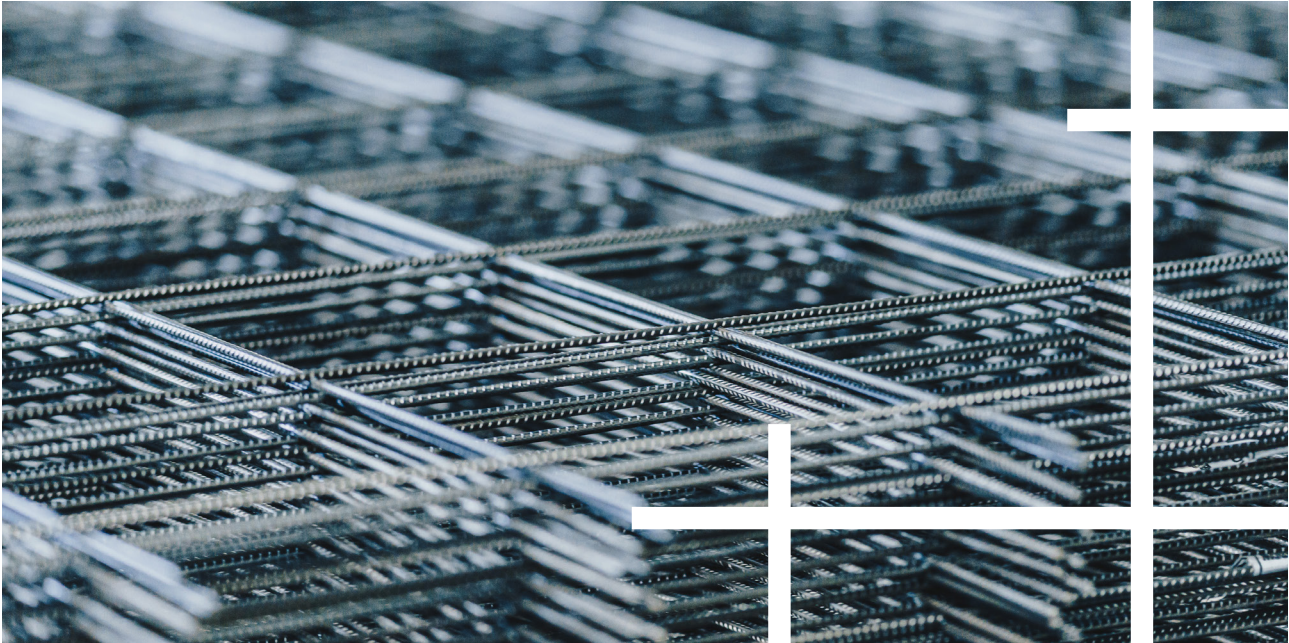


STANDARD REINFORCEMENT MESH

GERMANY



Standard reinforcement mesh is a standardized welded wire mesh, produced in different varieties.

Baustahlgewebe offers standard and special meshes in both grades. **B500A** normal ductility meshes made of cold-drawn wire as well as **B500B** high ductility meshes made of hot-rolled wire with special ribbing.

PRODUCT SPECIFIKATION

Grade	» B500A	or	B500B
Ductility	» Normal		High, on request
Fabricated	» according to DIN 488 or national technical approval		
Availability	» B500A from stock or production; B500B on request		

STANDARD REINFORCEMENT MESH

GERMANY TYPES

Q MESH AND R MESH

B500A, Ductility class A,
„normal ductility“

B500B, Ductility class B,
„high ductility“



Q MESH AND R MESH

According to DIN 488 or national technical approval

Mesh type	Mesh size in m	Wire spacing in mm	Wire ø in mm line/cross	Weight per mesh in kg	Items per bundle
Q188 A/B	6,00 x 2,30	150/150	6,0/6,0	41,736	50
Q257 A/B	6,00 x 2,30	150/150	7,0/7,0	56,776	40
Q335 A/B	6,00 x 2,30	150/150	8,0/8,0	74,260	30
Q424 A/B	6,00 x 2,30	150/150	9,0/9,0	84,356	30
Q524 A/B	6,00 x 2,30	150/150	10,0/10,0	100,876	20
Q636 A/B	6,00 x 2,35	100/125	9,0/10,0	131,998	20
R188 A/B	6,00 x 2,30	150/250	6,0/6,0	33,566	50
R257 A/B	6,00 x 2,30	150/250	7,0/6,0	41,246	50
R335 A/B	6,00 x 2,30	150/250	8,0/6,0	50,174	40
R424 A/B	6,00 x 2,30	150/250	9,0/8,0	67,212	30
R524 A/B	6,00 x 2,30	150/250	10,0/8,0	75,708	30

STANDARD REINFORCEMENT MESH

GERMANY TYPES

N MESH AND HS MESH

N meshes are non-static meshes, smooth surface

HS meshes are standardized special meshes to be bend as a U - shape for different kind of connections.



N MESH

non-static

Mesh type	Mesh size in m	Wire spacing in mm	Wire ϕ in mm line/cross	Weight per mesh in kg	Items per bundle
N94	5,00 x 2,15	75/75	3,0/3,0	15,898	50
N141	5,00 x 2,15	50/50	3,0/3,0	23,650	50

HS MESH

B500A

Mesh type	Mesh size LxW in m	Wire spacing in mm			Wire ϕ in mm line/cross	Weight per mesh in kg	Items per bundle
		Line wire		Cross wire			
		i_M	b	i_C			
HS1	5,00 x 1,25	3 x 100	600	150	6,0/6,0	18,315	50
HS2	5,00 x 1,85	3 x 150	900	150	6,0/6,0	22,844	50
HS3	5,00 x 1,85	3 x 150	900	150	8,0/8,0	40,646	50

STANDARD REINFORCEMENT MESH

GERMANY
TYPES

B MESH



B MESH

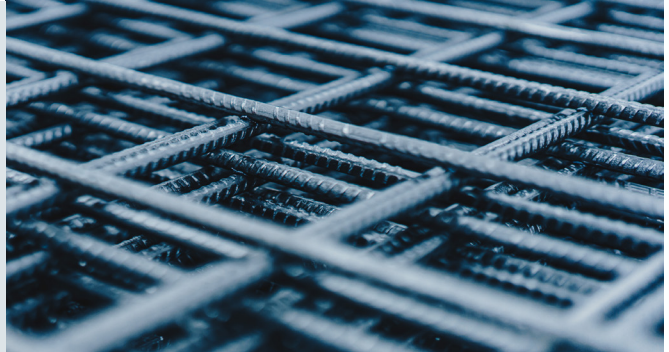
B500A/B according to DIN 488 or national technical approval

Mesh type	Mesh size in m	Wire spacing in mm	Wire \varnothing in mm line/cross	Overhang Above/Below Left/Right	Weight per mesh in kg	Items per bundle
B188 A/B	5,95 x 2,35	150/150	6,0/6,0	25/375 375/25	38,317	40
B257 A/B	5,95 x 2,35	150/150	7,0/7,0	25/525 525/25	49,619	30
B335 A/B	5,95 X 2,35	150/150	8,0/8,0	25/525 525/25	64,898	20
B424 A/B	5,95 x 2,35	150/150	9,0/9,0	25/525 525/25	81,986	20
B524 A/B	5,95 x 2,35	150/150	10,0/10,0	25/525 525/25	101,373	10
B636 A/B	5,95 x 2,35	100/125	9,0/10,0	25/550 525/25	120,210	10

STANDARD REINFORCEMENT MESH

GERMANY
TYPES

STIRRUP MESH

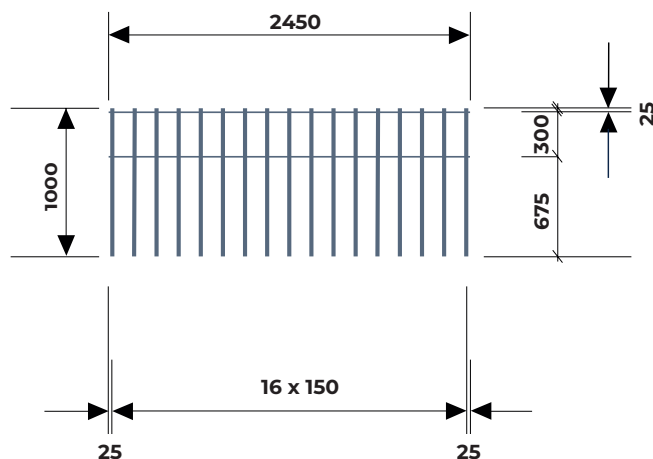


STIRRUP MESH

B500A/B according to DIN 488 or national technical approval

Mesh type	Length in mm	Width in mm	Ø of line wire in mm	Ø of cross wire in mm	Weight in kg
LM 335 - 1,0	1000	2450	8,0	6,0	7,803
LM 335 - 1,2	1200	2450	8,0	6,0	9,146
LM 524 - 1,0	1000	2450	10,0	8,0	12,425

LM 335 - 1,0

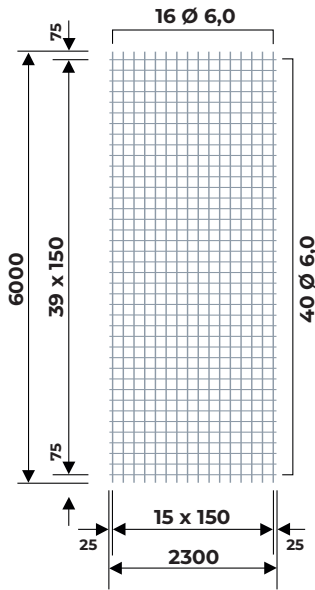


STANDARD REINFORCEMENT MESH

GERMANY
DRAWINGS
TYPE Q

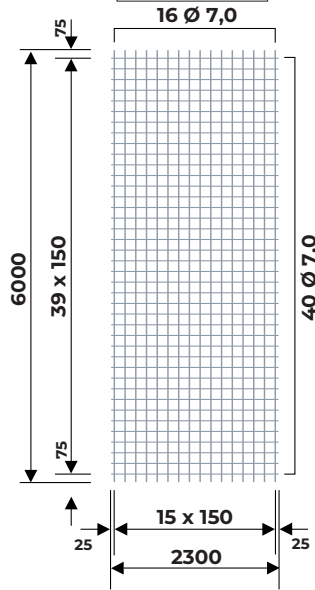
Q188 A/B

Weight [kg]	
per Mesh	per m ²
41,7	3,02



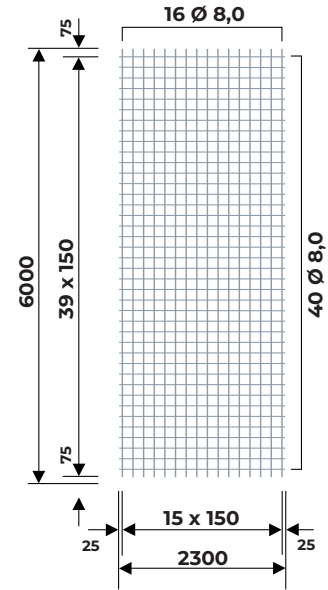
Q257 A/B

Weight [kg]	
per Mesh	per m ²
56,8	4,12



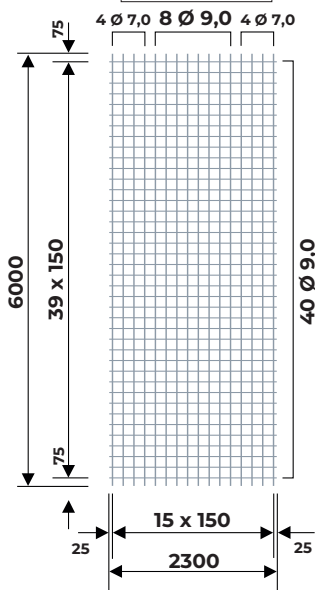
Q335 A/B

Weight [kg]	
per Mesh	per m ²
74,3	5,38



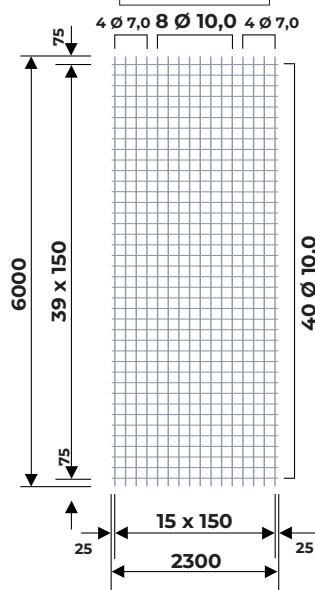
Q424 A/B

Weight [kg]	
per Mesh	per m ²
84,4	6,12



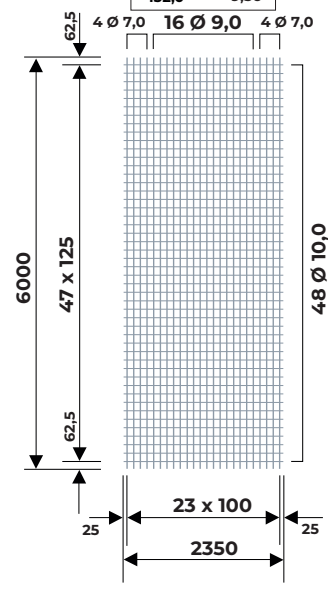
Q524 A/B

Weight [kg]	
per Mesh	per m ²
100,9	7,31



Q636 A/B

Weight [kg]	
per Mesh	per m ²
132,0	9,36

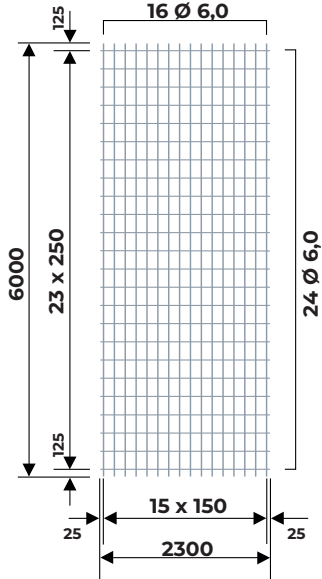


STANDARD REINFORCEMENT MESH

GERMANY
DRAWINGS
TYPE R

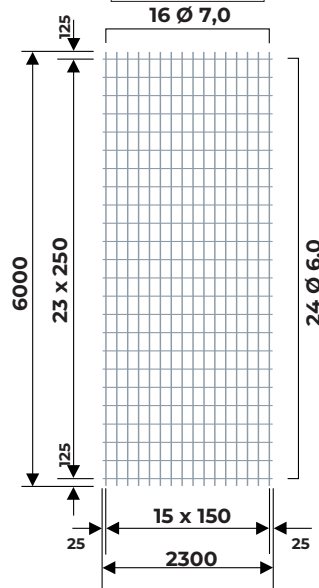
R188 A/B

Weight [kg]	
per Mesh	per m ²
33,6	2,43



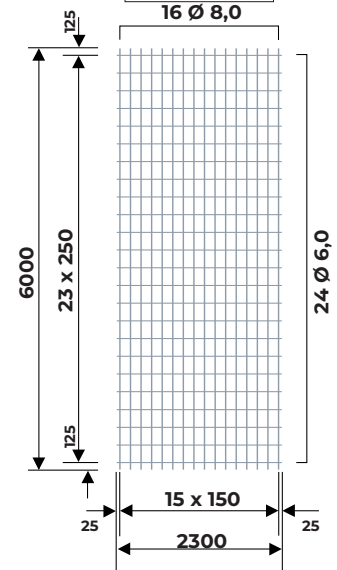
R257 A/B

Weight [kg]	
per Mesh	per m ²
41,2	2,99



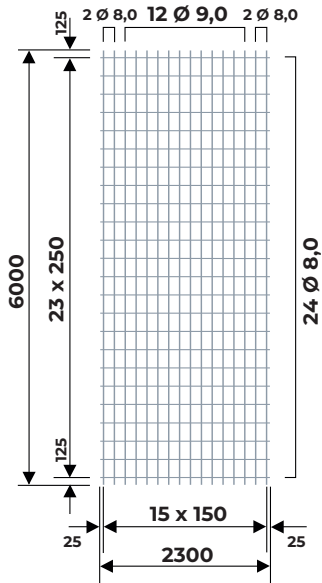
R335 A/B

Weight [kg]	
per Mesh	per m ²
50,2	3,64



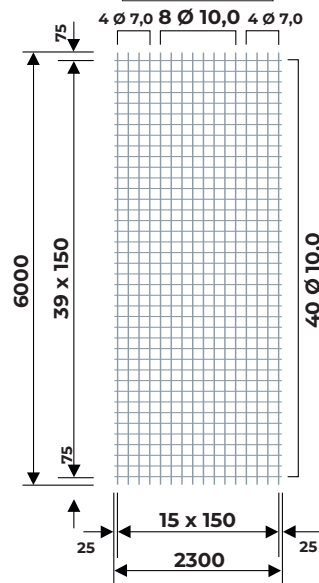
R424 A/B

Weight [kg]	
per Mesh	pro m ²
67,2	4,87



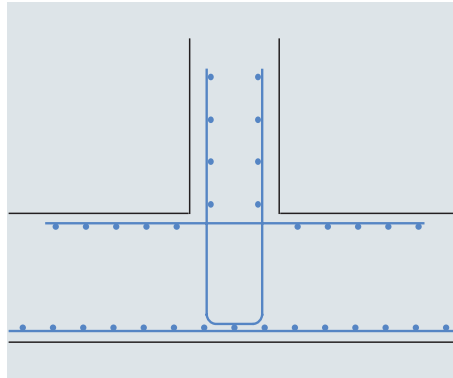
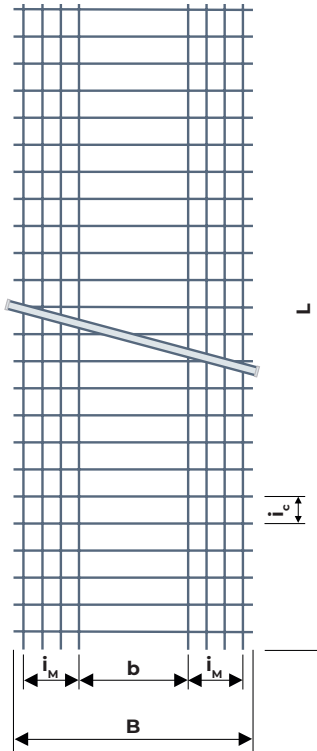
Q524 A/B

Weight [kg]	
per Mesh	per m ²
100,9	7,31



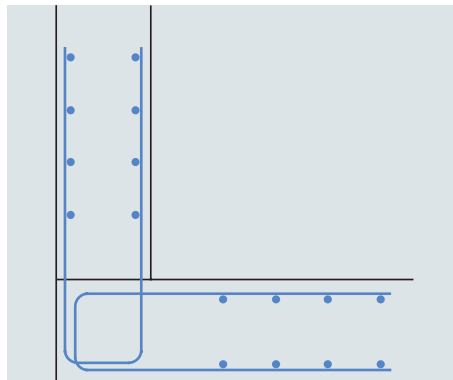
STANDARD REINFORCEMENT MESH

GERMANY
DRAWINGS
TYPE HS



CONNECTION

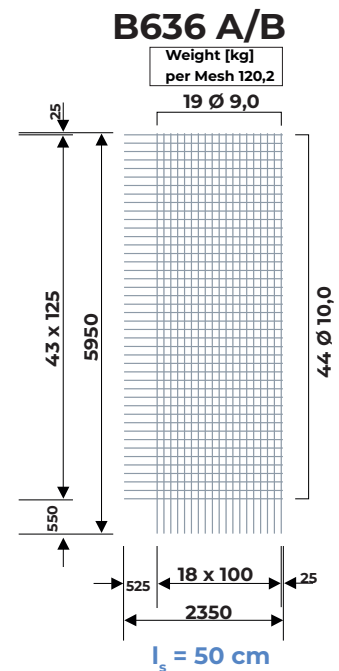
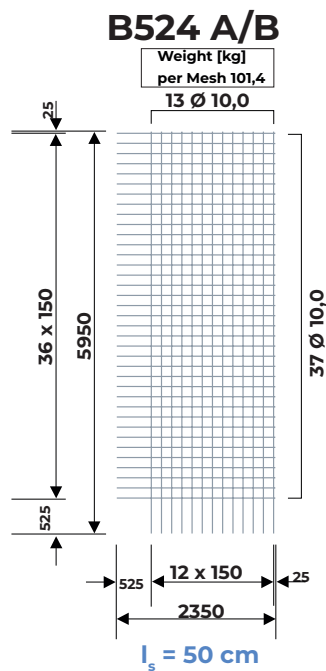
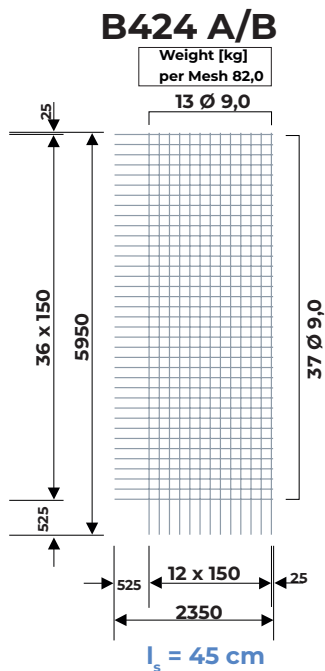
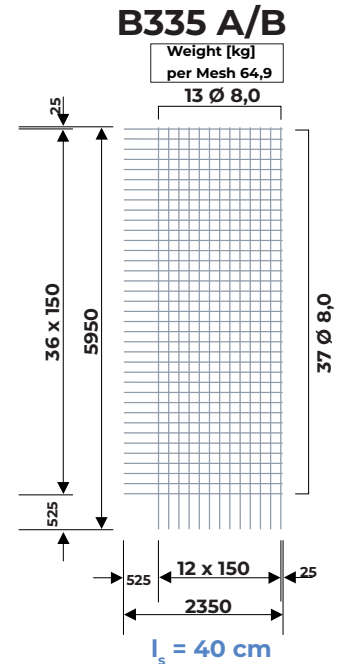
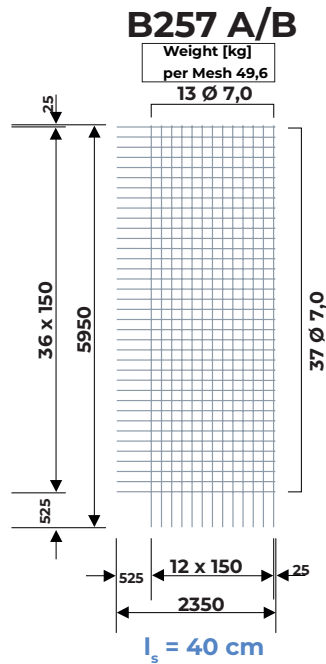
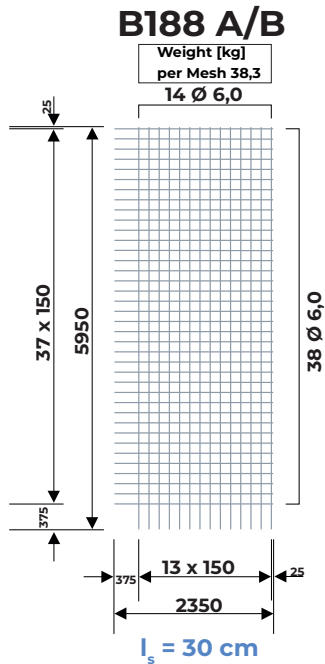
Wall - Wall
Wall - Ceiling
Wall - Foundation



CORNER CONNECTION

STANDARD REINFORCEMENT MESH

GERMANY
DRAWINGS
TYPE B



I_s details refer to concrete grade C20/25.