

# REINFORCEMENT ELEMENTS



Reinforcing elements are usually ready-to-install parts for the concrete element production.

Our elements ensure a high quality standard and gives the customers more effectivity in the production or on the construction site.

Our possibilities starts by simple forms, up to complex elements.

## PRODUCT SPECIFICATION

Grade	» B500A	or	B500B
Ductility	» Normal		High
Fabricated	» According to DIN 17660 or the customer's requirements		
Availability	» On request		
Certified for following countries	» CH   CZ   D   NL   PL		

# REINFORCEMENT ELEMENTS

## REINFORCEMENT FOR COVER AND INTERMEDIATE SLABS / INTERMEDIATE SAFETY SLABS

according to DIN V 4034-1/DIN EN 1917 or customer's requirements

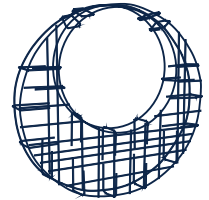
Nominal width: 800 / 900 / 1000 mm  
1500 / 2000 / 2500 / 3000 mm

- For cover slabs  
access hole Ø: 625 / 800 / 900 mm

- For intermediate slabs  
Reduction in nominal-Ø: 1000 / 1200 / 1500 mm

Number of openings: Up to 3  
(Special production according customer's requirements)

Welding technique: MAG or RP welded



## REINFORCEMENT RINGS

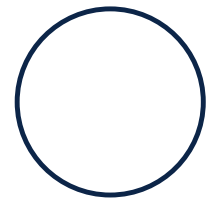
Max. dimensions: Ring Ø 3200 mm  
Wire Ø 4,0 - 12,0 mm

Design types: Single-, double or triple ring

Connection types: Butt-welded, overlapping, with hooks

Special shapes:

- For oval profile concrete tubes according to DIN 4032
- With spacer
- With small feet



## COVER PLATE REINFORCEMENT RINGS

Max. dimensions: Product Ø 1500 mm  
Wire Ø 4,0 - 12,0 mm

Design types: According to customers  
requirements

Connection types: Butt welded or RP welded

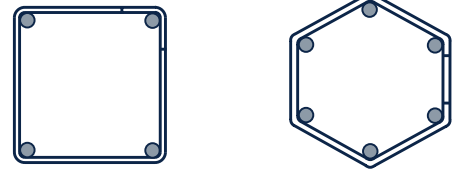


# REINFORCEMENT ELEMENTS

## REINFORCEMENT FOR CONCRETE ELEMENTS FOR LANDSCAPING PALISADE REINFORCEMENT

Max. element length                      Product 2500 mm  
Wire Ø 4,0 - 12,0 mm

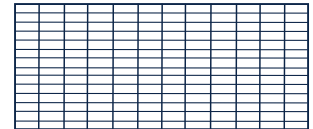
Design types:                                According to customer's requirements



## OTHER REINFORCEMENT ELEMENTS

For example:

- Road slab reinforcement
- Concrete lintel reinforcement
- Reinforcement chairs for oval profile concrete tubes in accordance with DIN 4032
- Square or rectangular reinforcement lattice, e.g. for cable ducts



Dimensions:                                According to customer's requirements

Design types:                                According to customer's requirements

Connection types:                        MAG or RP welded

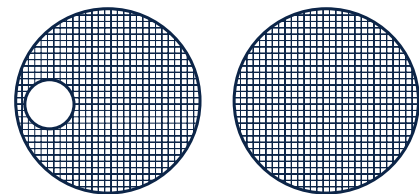


## REINFORCEMENT FOR CONTAINER CONSTRUCTION

Max. element diameter                    3000 mm with and without hole

Design types:                                According to customer's requirements

Welding technique:                        MAG or RP welded



## REINFORCEMENT FRAMES

Max. dimension                            Frame 2700 x 2700 mm  
Wire Ø 4,0 - 12,0 mm

Design types:                                Single, Double, quadruple frame

Connection types:                        Butt-welded, overlapping

Special shapes:

- With spacer
- With small feet
- With round front

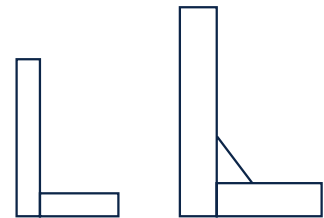
# REINFORCEMENT ELEMENTS

## REINFORCEMENT CHAIRS FOR RAILWAY SLEEPERS WITH NON-PRE-STRESSED REINFORCEMENT

Dimensions:	According to customer's request
Design types:	According to customer's request
Connection types:	RP-welded

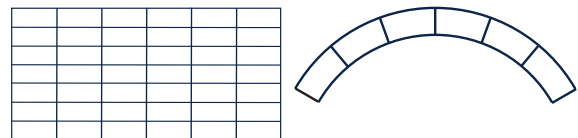
## REINFORCEMENT FOR CONCRETE ELEMENTS FOR LANDSCAPING L-BRICKS / ANGLE ELEMENTS REINFORCEMENT

Design and material characteristics:	According to customer's wishes
Height:	55-455 cm



## REINFORCEMENT CHAIRS FOR TUBING ELEMENTS

Dimensions:	According to customer's request
Design types:	According to customer's request
Connection types:	MAG or RP welded



## REINFORCEMENT CHAIRS FOR CABLE CONSTRUCTION DUCTS

Dimensions:	According to customer's request
Design types:	According to customer's request
Connection types:	MAG or RP welded

**Other elements available on request.**